

## INTERNATIONAL WOMEN'S DAY ART EXHIBITION 2016

### ARTISTS' ENTRY FORM

## JOIN THE CELEBRATIONS

### OFFICIAL OPENING

Friday 4<sup>th</sup> March 2016, 6.30pm – 8.30pm

AT GEELONG WINTERGARDEN

Prizes Announced

Sparkling Wine & Cheese

All artwork offered for sale

### PARTICIPATE IN JUDGING THE PEOPLE'S CHOICE AWARD

The Zonta Club of Geelong supports:

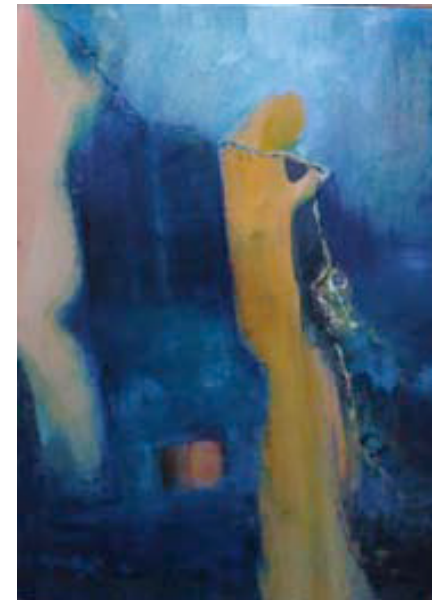
- Geelong says NO to Violence campaign
- Salvo Connect Women's Service – assisting women in crisis
- Scholarships for local students for excellence in public affairs, and also for those experiencing hardship and entering tertiary studies
- Breast care cushions for local cancer patients
- Birthing Kits for women in third world countries



**ZONTA**  
CLUB OF  
GEELONG INC  
MEMBER OF ZONTA INTERNATIONAL  
EMPOWERING WOMEN  
THROUGH SERVICE & ADVOCACY

### “ INTERNATIONAL WOMEN'S DAY CONVICTION-COMMITMENT-COURAGE”

- First Prize – Jan Mitchell Memorial Award - \$1000
- Second Prize – Art Supplies Voucher
- People's Choice Award



Winner 2014 Jan Mitchell Memorial Award. Artist: Mirjana Margetic



MAJOR SPONSOR

The Geelong Wintergarden 51 McKillop Street, Geelong,

[www.zontageelong.org.au](http://www.zontageelong.org.au)

CONDITIONS OF ENTRY

Artists may enter up to two pieces of work which may include painting, sculpture or any other medium.

- a. A fee of \$15 must accompany each entry.
- b. An entry must be the original, unaided, uncopied work of the artist to be offered for sale and is non-acquisitive.
- c. Artists should give due consideration to the exhibition title and theme “IWD – Conviction, Commitment, Courage and can address all or any part of the theme. An 80 – 100 word article describing their piece should accompany entries and how it relates to the theme of the Exhibition.
- d. Artists are asked to consider the environment when preparing pieces for the Exhibition.
- e. **Entry forms** (including piece description) with postal note or cheque to Zonta Art Exhibition, PO Box 1120, Geelong 3220. **Cheques payable to Zonta Club of Geelong Inc. or direct deposit** BSB 063525, Account No 00903142 Zonta Club of Geelong Inc.
- f. Dimensions of 2-D work must be no larger than 1.2m<sub>2</sub> and suitably framed provided with D-hooks and wire ready to hang  
3-D work must be easily portable and provided with a suitable plinth, stand or locked showcase
- g. All artwork will be offered for sale with a 30% commission payable to the Zonta Club of Geelong’s Inc projects.
- h. Each exhibit must have, on the back or tagged, clearly displaying the artist’s name, the title of the work, the medium and the asking price, including GST if applicable.
- i. **Works are to be delivered on Tuesday 1<sup>st</sup> March to Art@ Wintergarden between 10am and 3 pm. Works will be displayed from 4<sup>th</sup> to 15<sup>th</sup> March .**
- j. Unsold works must be collected at the same address on **Tue 15<sup>th</sup> March** between 2pm and 4 pm.
- k. The **official exhibition opening** will be held on **Friday 4<sup>th</sup> March 2016 6.30pm to 8.30 pm at the Wintergarden**
- l. The Zonta Club of Geelong Inc in partnership with Art @ Wintergarden will exercise all reasonable care with exhibits, but does not accept responsibility for damage or loss.
- m. The Zonta Club of Geelong Inc and Art@Wintergarden reserve the right to select the works to be exhibited.
- n. Works are exhibited on the understanding that permission is granted to the Zonta Club of Geelong Inc to use images for promotional purposes at the club’s discretion.
- o. The judges’ decision will be final for the art awards. The People’s Choice Award will be announced and presented at a subsequent Zonta Club of Geelong meeting

ART ENTRY DETAILS

MR/MRS/MS ..... SURNAME ..... GIVEN NAME .....

ADDRESS .....

POSTCODE..... PHONE..... ABN (if applicable) .....

EMAIL.....

TITLE	MEDIUM	PRICE

PLEASE ATTACH OR SUBMIT ON USB 80 – 100 WORD PIECE DESCRIPTION  
 ENTRY FEE \$..... ENCLOSED  
 I WILL/WILL NOT BE ATTENDING THE OFFICIAL OPENING ON 4<sup>th</sup> MARCH 2016.  
 I HAVE READ THE CONDITIONS OF ENTRY

SIGNATURE OF ENTRANT .....

**ENTRIES CLOSE**  
**Friday 26th February 2016**